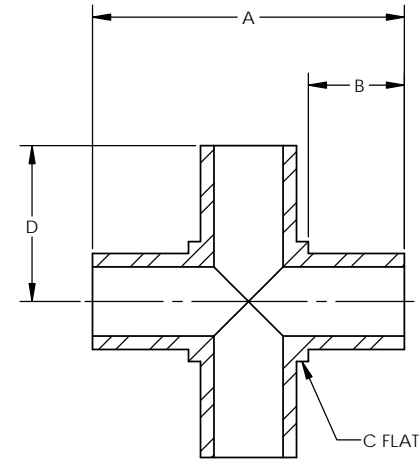


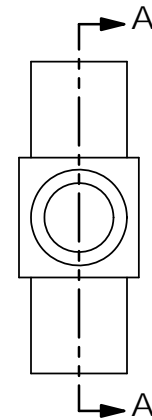
ORDERING NUMBER
 5007 - X - X - X

┌───┐ PURITY
 │───┘ MATERIAL
 └───┘ TUBE SIZE

TUBE SIZE	TUBE ID	ORDERING NUMBER	DIMENSIONS			
			[A]	[B]	[C]	[D]
1/8	0.07	5007-2-X-X	0.81	0.25	5/16	0.41
1/4	0.18	5007-4-X-X				
3/8	0.30	5007-6-X-X	0.94		7/16	0.47
1/2	0.40	5007-8-X-X	1.06		9/16	0.53



SECTION A-A



MATERIAL DESIGNATORS

S = 316L SST SEMI F20
 A = 316L
 B = 316L SST SEMI F20 VIM/VAR
 N = NICKEL 200
 M = NICKEL 400
 H = NICKEL ALLOY C22

PURITY DESIGNATORS

S = STANDARD FINISH
 H = HIGH PURITY
 U = ULTRA-HIGH PURITY

NOTES:
 1. DRAWINGS FOR SPECIFICATION PURPOSES AND ARE FOR REFERENCE ONLY.
 2. ALL VERSIONS OF THE DRAWING ARE SUPERSEDED BY THIS RELEASE AND SUBJECT TO CHANGE WITHOUT NOTIFICATION.

EFFECTIVE DATE: 2/6/2017	 1003 INDUSTRIAL DRIVE SAUK RAPIDS, MN 56379 VOICE: 320-251-0390 FAX: 320-251-5810
INTERPRET DRAWING PER: ASME Y14.5 - 2009	
THIRD ANGLE PROJECTION:	
PROPRIETARY AND CONFIDENTIAL THE INFORMATION CONTAINED IN THIS DRAWING IS THE SOLE PROPERTY OF TALON INNOVATIONS, INC. ANY REPRODUCTION IN PART OR AS A WHOLE WITHOUT THE WRITTEN PERMISSION OF TALON INNOVATIONS, INC. IS PROHIBITED.	DESCRIPTION: MINI CROSS
DO NOT SCALE DRAWING	SIZE: C PART NUMBER: 5007-X-X-X SCALE: 4:1 SHEET 1 OF 1