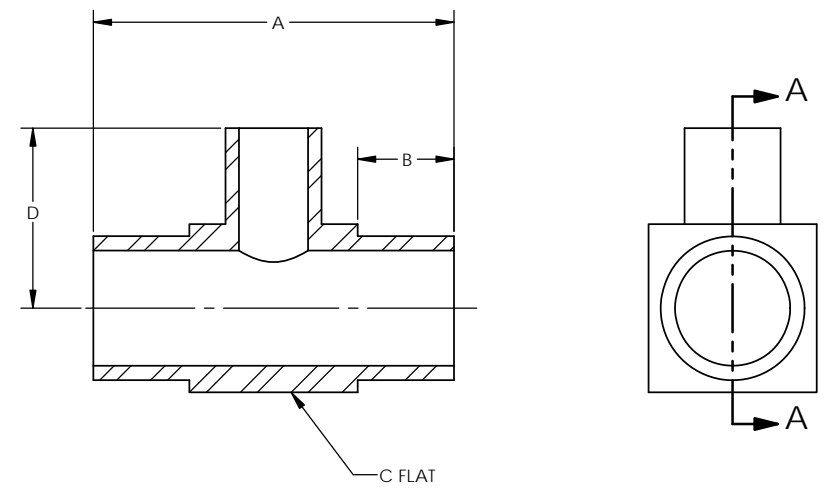


TUBE SIZE 1	TUBE ID 1	TUBE SIZE 2	TUBE ID 2	ORDERING NUMBER	DIMENSIONS			
					[A]	[B]	[C]	[D]
3/8	0.30	1/4	0.18	5009-6-4-X-X	0.94	0.25	7/16	0.47
1/2	0.40			5009-8-4-X-X	1.06		9/16	0.53
		5009-8-6-X-X	1.06	9/16	0.53			



SECTION A-A

- | MATERIAL DESIGNATORS          | PURITY DESIGNATORS    |
|-------------------------------|-----------------------|
| S = 316L SST SEMI F20         | S = STANDARD FINISH   |
| A = 316L                      | H = HIGH PURITY       |
| B = 316L SST SEMI F20 VIM/VAR | U = ULTRA-HIGH PURITY |
| N = NICKEL 200                |                       |
| M = NICKEL 400                |                       |
| H = NICKEL ALLOY C22          |                       |

NOTES:  
 1. DRAWINGS FOR SPECIFICATION PURPOSES AND ARE FOR REFERENCE ONLY.  
 2. ALL VERSIONS OF THE DRAWING ARE SUPERSEDED BY THIS RELEASE AND SUBJECT TO CHANGE WITHOUT NOTIFICATION.

EFFECTIVE DATE: 2/6/2017		<b>TALON</b> <small>INNOVATION WITH PRECISION</small>	1003 INDUSTRIAL DRIVE SAUK RAPIDS, MN 56379 VOICE: 320-251-0390 FAX: 320-251-5810
INTERPRET DRAWING PER: ASME Y14.5 - 2009			<b>DESCRIPTION:</b> <b>MINI REDUCING TEE</b>
THIRD ANGLE PROJECTION:			
PROPRIETARY AND CONFIDENTIAL THE INFORMATION CONTAINED IN THIS DRAWING IS THE SOLE PROPERTY OF TALON INNOVATIONS, INC. ANY REPRODUCTION IN PART OR AS A WHOLE WITHOUT THE WRITTEN PERMISSION OF TALON INNOVATIONS, INC. IS PROHIBITED.		<b>SIZE:</b> <span style="font-size: 2em; font-weight: bold;">C</span>	<b>PART NUMBER:</b> <span style="font-size: 1.2em; font-weight: bold;">5009-X-X-X-X</span>
DO NOT SCALE DRAWING		<b>SCALE:</b> 4:1	<b>SHEET 1 OF 1</b>