

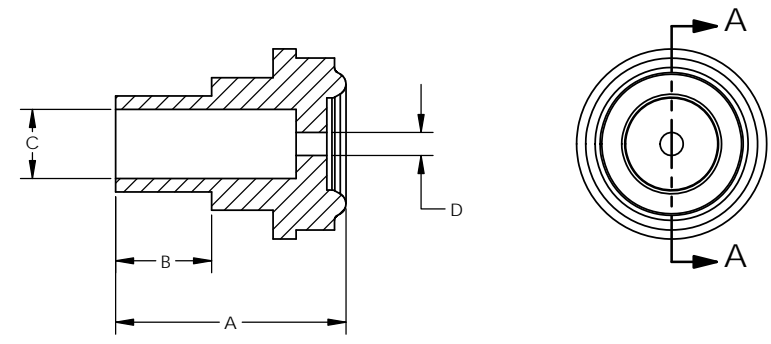
ORDERING NUMBER
 5021 - 4 - X.XX - X - X

PART LENGTH

MATERIAL

PURITY

TUBE SIZE	FACE SEAL SIZE	ORDERING NUMBER	DIMENSIONS			
			[A]	[B]	[C]	[D]
1/4	1/4	5021-4-0.60-X-X	0.60	0.25	0.18	*
		5021-4-1.20-X-X	1.20			
		5021-4-1.10-X-X	1.10	0.75		
		5021-4-1.70-X-X	1.70			



SECTION A-A

MATERIAL DESIGNATORS

S = 316L SST SEMI F20
 A = 316L
 B = 316L SST SEMI F20 VIM/VAR
 N = NICKEL 200
 M = NICKEL 400
 H = NICKEL ALLOY C22

PURITY DESIGNATORS

S = STANDARD FINISH
 H = HIGH PURITY
 U = ULTRA-HIGH PURITY

*WHEN ORDERING, MUST SPECIFY ORIFICE DIAMETER [D] OR THE FOLLOWING:
 GAS TYPE, FLOW RATE, INLET PRESSURE, AND OUTLET PRESSURE.

NOTES:
 1. DRAWINGS FOR SPECIFICATION PURPOSES AND ARE FOR REFERENCE ONLY.
 2. ALL VERSIONS OF THE DRAWING ARE SUPERSEDED BY THIS RELEASE AND SUBJECT TO CHANGE WITHOUT NOTIFICATION.

EFFECTIVE DATE: 2/6/2017		 INNOVATION WITH PRECISION	1003 INDUSTRIAL DRIVE SAUK RAPIDS, MN 56379 VOICE: 320-251-0390 FAX: 320-251-5810	
INTERPRET DRAWING PER: ASME Y14.5 - 2009			DESCRIPTION: ORIFICE GLAND, 1/4" TUBE	
THIRD ANGLE PROJECTION			SIZE: C	PART NUMBER: 5021-4-X.XX-X-X
DO NOT SCALE DRAWING		SCALE: 4:1	SHEET 1 OF 1	