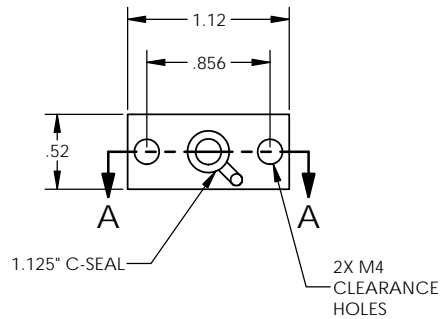




ORDERING NUMBER			
MFC-PLUG - 18 - 1 - X - X			
			PURITY
			MATERIAL
			SEAL TYPE
			BASE SIZE



MATERIAL DESIGNATORS
S = 316L SST SEMI F20
A = 316L
B = 316L SST SEMI F20 VIM/VAR
N = NICKEL 200
M = NICKEL 400
H = NICKEL ALLOY C22

PURITY DESIGNATORS
S = STANDARD FINISH
H = HIGH PURITY
U = ULTRA-HIGH PURITY

NOTES:  
 1. DRAWINGS FOR SPECIFICATION PURPOSES AND ARE FOR REFERENCE ONLY.  
 2. ALL VERSIONS OF THE DRAWING ARE SUPERSEDED BY THIS RELEASE AND SUBJECT TO CHANGE WITHOUT NOTIFICATION.

EFFECTIVE DATE: 10/16/2017	 INNOVATION WITH PRECISION 1003 INDUSTRIAL DRIVE SAUK RAPIDS, MN 56379 VOICE: 320-251-0390 FAX: 320-251-5810
INTERPRET DRAWING PER: ASME Y14.5 - 2009	
THIRD ANGLE PROJECTION: 	
PROPRIETARY AND CONFIDENTIAL THE INFORMATION CONTAINED IN THIS DRAWING IS THE SOLE PROPERTY OF TALON INNOVATIONS, INC. ANY REPRODUCTION IN PART OR AS A WHOLE WITHOUT THE WRITTEN PERMISSION OF TALON INNOVATIONS, INC. IS PROHIBITED.	DESCRIPTION: <b>MFC-PLUG 1.125" C-SEAL</b>
DO NOT SCALE DRAWING	SIZE: <b>C</b> PART NUMBER: <b>MFC-PLUG-18-1-X-X</b> SCALE: 3:2 SHEET 1 OF 1