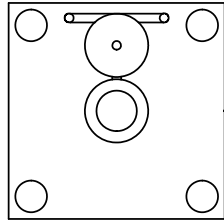
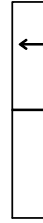


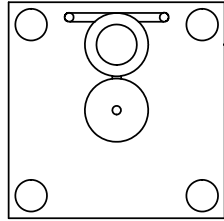
TALON
MFR-24HF-1-1-X-X
1.500" HF C-SEAL
C-SEAL
MATERIAL
CONFIGURATION
NUMBER OF PORTS
SEAL TYPE
BASE SIZE



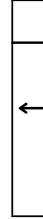
2-PORT, SIDE



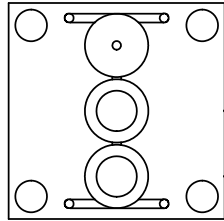
TALON
MFR-24HF-1-2-X-X
1.500" HF C-SEAL
C-SEAL
MATERIAL
CONFIGURATION
NUMBER OF PORTS
SEAL TYPE
BASE SIZE



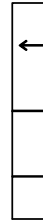
2-PORT, CENTER



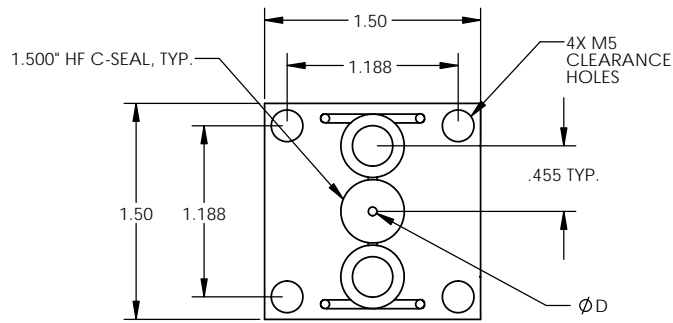
TALON
MFR-24HF-1-3-1-X-X
1.500" HF C-SEAL
C-SEAL
MATERIAL
CONFIGURATION
NUMBER OF PORTS
SEAL TYPE
BASE SIZE



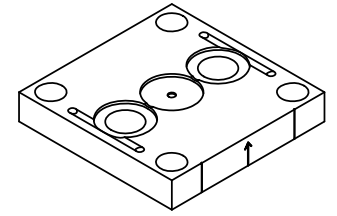
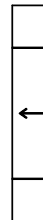
3-PORT, SIDE



TALON
MFR-24HF-1-3-2-X-X
1.500" HF C-SEAL
C-SEAL
MATERIAL
CONFIGURATION
NUMBER OF PORTS
SEAL TYPE
BASE SIZE



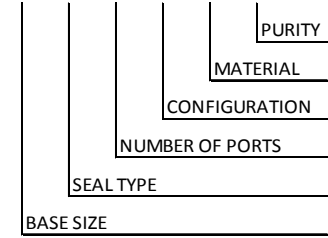
3-PORT, CENTER



3-PORT, CENTER

ORDERING NUMBER

MFR - 24HF - 1 - X - X - X - X



BASE SIZE	SEAL TYPE	NUMBER OF PORTS	CONFIGURATION	ORDERING NUMBER
1.500" HF	C-SEAL	2-PORTS	SIDE	MFR-24HF-1-2-1-X-X
			CENTER	MFR-24HF-1-2-2-X-X
		3-PORTS	SIDE	MFR-24HF-1-3-1-X-X
			CENTER	MFR-24HF-1-3-2-X-X

MATERIAL DESIGNATORS

- S = 316L SST SEMI F20
- A = 316L
- B = 316L SST SEMI F20 VIM/VAR
- N = NICKEL 200
- M = NICKEL 400
- H = NICKEL ALLOY C22

PURITY DESIGNATORS

- S = STANDARD FINISH
- H = HIGH PURITY
- U = ULTRA-HIGH PURITY

*WHEN ORDERING, MUST SPECIFY ORIFICE DIAMETER [D] OR THE FOLLOWING:
GAS TYPE, FLOW RATE, INLET PRESSURE, AND OUTLET PRESSURE.

EFFECTIVE DATE: 2/6/2017	<p>1003 INDUSTRIAL DRIVE SAUK RAPIDS, MN 56379 VOICE: 320-251-0390 FAX: 320-251-5810</p>		
INTERPRET DRAWING PER: ASME Y14.5 - 2009			
THIRD ANGLE PROJECTION:			
PROPRIETARY AND CONFIDENTIAL THE INFORMATION CONTAINED IN THIS DRAWING IS THE SOLE PROPERTY OF TALON INNOVATIONS, INC. ANY REPRODUCTION IN PART OR AS A WHOLE WITHOUT THE WRITTEN PERMISSION OF TALON INNOVATIONS, INC. IS PROHIBITED.	DESCRIPTION: MODULAR FLOW RESTRICTOR 1.500" HF C-SEAL		
DO NOT SCALE DRAWING	<table border="1"> <tr> <td>SIZE C</td> <td>PART NUMBER: MFR-24HF-1-X-X-X-X</td> </tr> </table>	SIZE C	PART NUMBER: MFR-24HF-1-X-X-X-X
SIZE C	PART NUMBER: MFR-24HF-1-X-X-X-X		
SCALE: 3:2	SHEET 1 OF 1		

NOTES:
1. DRAWINGS FOR SPECIFICATION PURPOSES AND ARE FOR REFERENCE ONLY.
2. ALL VERSIONS OF THE DRAWING ARE SUPERSEDED BY THIS RELEASE AND SUBJECT TO CHANGE WITHOUT NOTIFICATION.