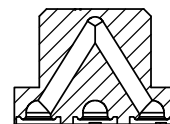
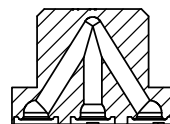


SECTION A-A

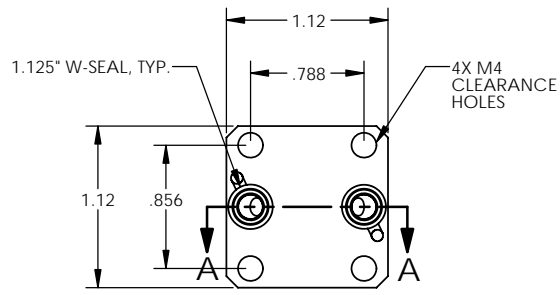


SECTION B-B

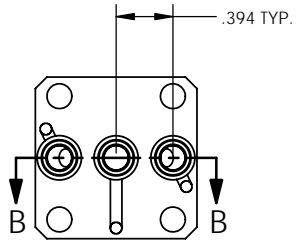


SECTION C-C

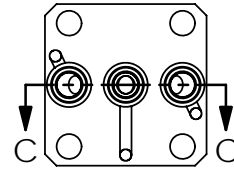
BASE SIZE	SEAL TYPE	NUMBER OF PORTS	CONFIGURATION	ORDERING NUMBER
1.125"	W-SEAL	2-PORTS	---	MTC-18-2-2-X-X
		3-PORTS	BLANK	MTC-18-2-3B-X-X
			CONNECTED	MTC-18-2-3C-X-X



2-PORT



3-PORT, BLANK



3-PORT, CONNECTED

- MATERIAL DESIGNATORS**
- S = 316L SST SEMI F20
 - A = 316L
 - B = 316L SST SEMI F20 VIM/VAR
 - N = NICKEL 200
 - M = NICKEL 400
 - H = NICKEL ALLOY C22

- PURITY DESIGNATORS**
- S = STANDARD FINISH
 - H = HIGH PURITY
 - U = ULTRA-HIGH PURITY

NOTES:
 1. DRAWINGS FOR SPECIFICATION PURPOSES AND ARE FOR REFERENCE ONLY.
 2. ALL VERSIONS OF THE DRAWING ARE SUPERSEDED BY THIS RELEASE AND SUBJECT TO CHANGE WITHOUT NOTIFICATION.

EFFECTIVE DATE: 2/6/2017	<p>1003 INDUSTRIAL DRIVE SAUK RAPIDS, MN 56379 VOICE: 320-251-0390 FAX: 320-251-5810</p>				
INTERPRET DRAWING PER: ASME Y14.5 - 2009					
THIRD ANGLE PROJECTION:					
PROPRIETARY AND CONFIDENTIAL THE INFORMATION CONTAINED IN THIS DRAWING IS THE SOLE PROPERTY OF TALON INNOVATIONS, INC. ANY REPRODUCTION IN PART OR AS A WHOLE WITHOUT THE WRITTEN PERMISSION OF TALON INNOVATIONS, INC. IS PROHIBITED.	DESCRIPTION: MODULAR TOP CAP 1.125" W-SEAL				
DO NOT SCALE DRAWING	<table border="1"> <tr> <td>SIZE C</td> <td>PART NUMBER: MTC-18-2-XX-X-X</td> </tr> <tr> <td>SCALE: 3:2</td> <td>SHEET 1 OF 1</td> </tr> </table>	SIZE C	PART NUMBER: MTC-18-2-XX-X-X	SCALE: 3:2	SHEET 1 OF 1
SIZE C	PART NUMBER: MTC-18-2-XX-X-X				
SCALE: 3:2	SHEET 1 OF 1				