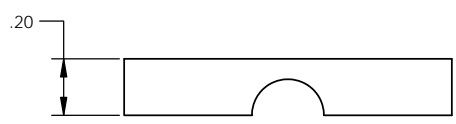

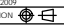


2X M3 CLEARANCE HOLES

2X M4 CLEARANCE HOLES



- NOTES:
1. DRAWINGS FOR SPECIFICATION PURPOSES AND ARE FOR REFERENCE ONLY.
 2. ALL VERSIONS OF THE DRAWING ARE SUPERSEDED BY THIS RELEASE AND SUBJECT TO CHANGE WITHOUT NOTIFICATION.
 3. MATERIAL: ALUMINUM.

| | | | |
|---|--|--|-----------------------------------|
| EFFECTIVE DATE: 2/6/2017 | |  INNOVATION WITH PRECISION 1003 INDUSTRIAL DRIVE SAUK RAPIDS, MN 56379 VOICE: 320-251-0390 FAX: 320-251-5810 | |
| INTERPRET DRAWING PER: ASME Y14.5 - 2009 | | | |
| THIRD ANGLE PROJECTION  | | | |
| PROPRIETARY AND CONFIDENTIAL THE INFORMATION CONTAINED IN THIS DRAWING IS THE SOLE PROPERTY OF TALON INNOVATIONS, INC. ANY REPRODUCTION IN PART OR AS A WHOLE WITHOUT THE WRITTEN PERMISSION OF TALON INNOVATIONS, INC. IS PROHIBITED. | | DESCRIPTION: TMS 1.125" I/O CRADLE CAP | |
| DO NOT SCALE DRAWING | | SIZE C | PART NUMBER: 03-10-0106 |
| | | SCALE: 3:1 | SHEET 1 OF 1 |