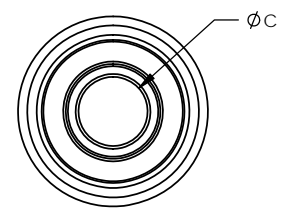
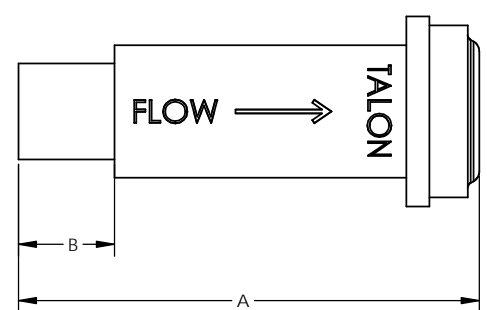


ORDERING NUMBER

GCV - X - X.XX - X - X

		PURITY
		MATERIAL
		PART LENGTH
	TUBE SIZE	



TUBE SIZE	FACE SEAL SIZE	ORDERING NUMBER	DIMENSIONS		
			[A]	[B]	[C]
1/4	1/4	GCV-4-1.20-X-X	1.20	0.25	0.18
		GCV-4-1.70-X-X	1.70		
3/8	1/2	GCV-6-1.79-X-X	1.79	0.75	0.30
1/2		GCV-8-1.79-X-X			0.40

MATERIAL DESIGNATORS

S = 316L SST SEMI F20
 A = 316L
 B = 316L SST SEMI F20 VIM/VAR
 N = NICKEL 200
 M = NICKEL 400
 H = NICKEL ALLOY C22

PURITY DESIGNATORS

S = STANDARD FINISH
 H = HIGH PURITY
 U = ULTRA-HIGH PURITY

NOTES:
 1. DRAWINGS FOR SPECIFICATION PURPOSES AND ARE FOR REFERENCE ONLY.
 2. ALL VERSIONS OF THE DRAWING ARE SUPERSEDED BY THIS RELEASE AND SUBJECT TO CHANGE WITHOUT NOTIFICATION.

EFFECTIVE DATE: 2/6/2017	 INNOVATION WITH PRECISION	1003 INDUSTRIAL DRIVE SAUK RAPIDS, MN 56379 VOICE: 320-251-0390 FAX: 320-251-5810
INTERPRET DRAWING PER: ASME Y14.5 - 2009		
THIRD ANGLE PROJECTION		
PROPRIETARY AND CONFIDENTIAL THE INFORMATION CONTAINED IN THIS DRAWING IS THE SOLE PROPERTY OF TALON INNOVATIONS, INC. ANY REPRODUCTION IN PART OR AS A WHOLE WITHOUT THE WRITTEN PERMISSION OF TALON INNOVATIONS, INC. IS PROHIBITED.	DESCRIPTION: GLAND CHECK VALVE	
SIZE C	PART NUMBER: GCV-X-X.XX-X-X	
DO NOT SCALE DRAWING	SCALE: 4:1	SHEET 1 OF 1