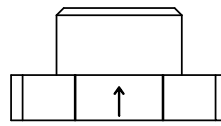
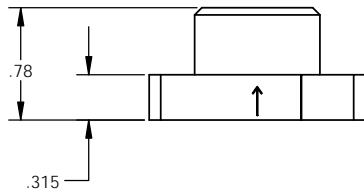
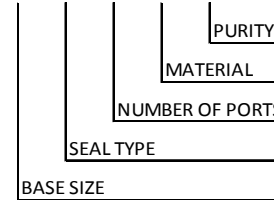
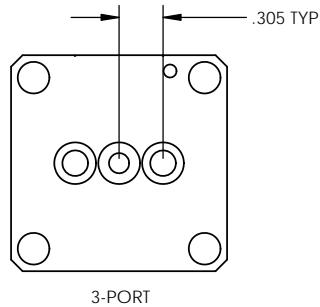
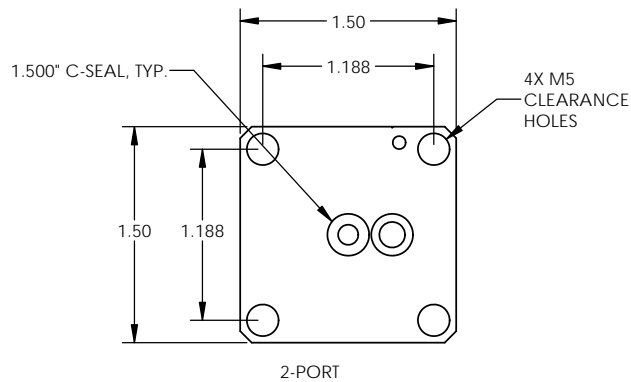


ORDERING NUMBER

TMCV - 24 - 1 - X - X - X



BASE SIZE	SEAL TYPE	NUMBER OF PORTS	ORDERING NUMBER
1.500"	C-SEAL	2-PORTS	TMCV-24-1-2-X-X
		3-PORTS	TMCV-24-1-3-X-X



MATERIAL DESIGNATORS

- S = 316L SST SEMI F20
- A = 316L
- B = 316L SST SEMI F20 VIM/VAR
- N = NICKEL 200
- M = NICKEL 400
- H = NICKEL ALLOY C22

PURITY DESIGNATORS

- S = STANDARD FINISH
- H = HIGH PURITY
- U = ULTRA-HIGH PURITY

NOTES:
 1. DRAWINGS FOR SPECIFICATION PURPOSES AND ARE FOR REFERENCE ONLY.
 2. ALL VERSIONS OF THE DRAWING ARE SUPERSEDED BY THIS RELEASE AND SUBJECT TO CHANGE WITHOUT NOTIFICATION.

EFFECTIVE DATE: 10/16/2017		1003 INDUSTRIAL DRIVE SAUK RAPIDS, MN 56379 VOICE: 320-251-0390 FAX: 320-251-5810
INTERPRET DRAWING PER: ASME Y14.5 - 2009		DESCRIPTION: TOP MOUNT CHECK VALVE 1.500" C-SEAL
THIRD ANGLE PROJECTION:		SIZE: C PART NUMBER: TMCV-24-1-X-X-X
PROPRIETARY AND CONFIDENTIAL THE INFORMATION CONTAINED IN THIS DRAWING IS THE SOLE PROPERTY OF TALON INNOVATIONS, INC. ANY REPRODUCTION IN PART OR AS A WHOLE WITHOUT THE WRITTEN PERMISSION OF TALON INNOVATIONS, INC. IS PROHIBITED.		SCALE: 3:2
DO NOT SCALE DRAWING		SHEET 1 OF 1