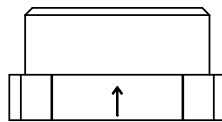
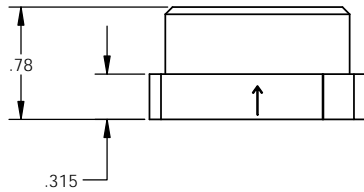
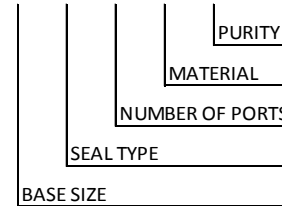
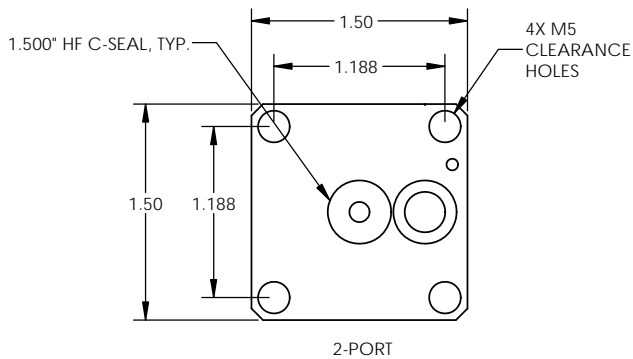


ORDERING NUMBER

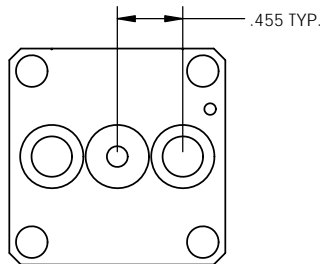
TMCV - 24HF - 1 - X - X - X



| BASE SIZE | SEAL TYPE | NUMBER OF PORTS | ORDERING NUMBER |
|-----------|-----------|-----------------|-------------------|
| 1.500" HF | C-SEAL | 2-PORTS | TMCV-24HF-1-2-X-X |
| | | 3-PORTS | TMCV-24HF-1-3-X-X |



2-PORT



3-PORT

MATERIAL DESIGNATORS

- S = 316L SST SEMI F20
- A = 316L
- B = 316L SST SEMI F20 VIM/VAR
- N = NICKEL 200
- M = NICKEL 400
- H = NICKEL ALLOY C22

PURITY DESIGNATORS

- S = STANDARD FINISH
- H = HIGH PURITY
- U = ULTRA-HIGH PURITY

NOTES:
 1. DRAWINGS FOR SPECIFICATION PURPOSES AND ARE FOR REFERENCE ONLY.
 2. ALL VERSIONS OF THE DRAWING ARE SUPERSEDED BY THIS RELEASE AND SUBJECT TO CHANGE WITHOUT NOTIFICATION.

| | | |
|---|--|--|
| EFFECTIVE DATE: 10/16/2017 | | 1003 INDUSTRIAL DRIVE SAUK RAPIDS, MN 56379 VOICE: 320-251-0390 FAX: 320-251-5810 |
| INTERPRET DRAWING PER: ASME Y14.5 - 2009 | | DESCRIPTION: TOP MOUNT CHECK VALVE 1.500" HF C-SEAL |
| THIRD ANGLE PROJECTION | | SIZE: C PART NUMBER: TMCV-24HF-1-X-X-X |
| PROPRIETARY AND CONFIDENTIAL THE INFORMATION CONTAINED IN THIS DRAWING IS THE SOLE PROPERTY OF TALON INNOVATIONS, INC. ANY REPRODUCTION IN PART OR AS A WHOLE WITHOUT THE WRITTEN PERMISSION OF TALON INNOVATIONS, INC. IS PROHIBITED. | | SCALE: 3:2 |
| DO NOT SCALE DRAWING | | SHEET 1 OF 1 |